


# The 1613

Arrowhead Farms Community



PRICE FROM:

**\$279,900**

 1,620 - 1668  
Ft<sup>2</sup>

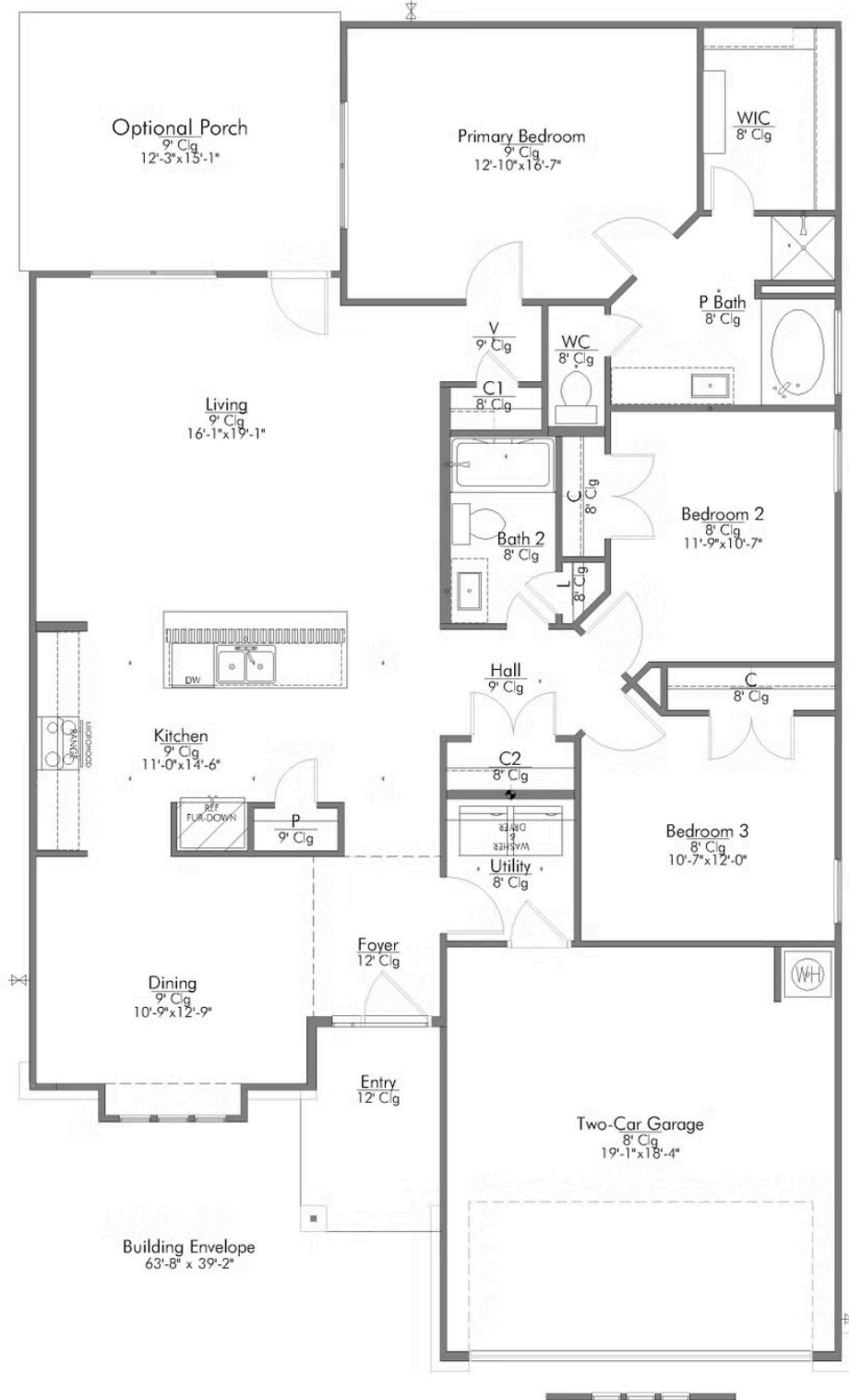
 3 Bedrooms

 2 Bathrooms

 2 Car Garage

Some images shown may be from a previously built Stylecraft home of similar design. Actual options, colors, and selections may vary. Contact us for details!

Our most popular floor plan! This charming 3 bedroom, 2 bath home is known for its intelligent use of space and now features an even more open living area. The large kitchen granite-topped island opens up to your living room to provide a cozy flow throughout the home. Your dining room features the most charming front window you'll ever see, which is accented by your gorgeous front elevation. Featuring large walk-in closets, luxury flooring, and volume ceilings – the 1613 certainly delivers when it comes to affordable luxury.

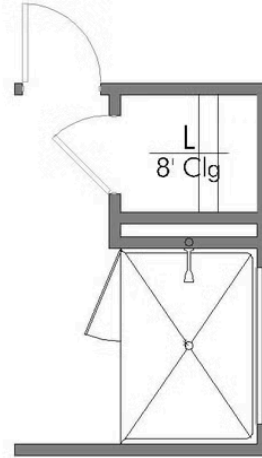




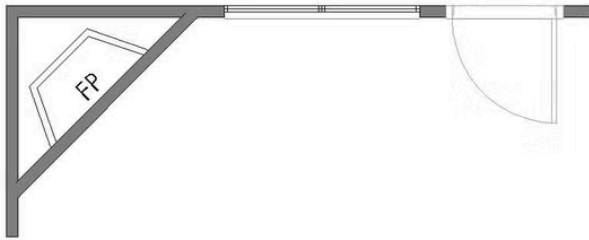
## COVERED PORCH

Porch  
9' Clg  
12'-3" x 15'-1"

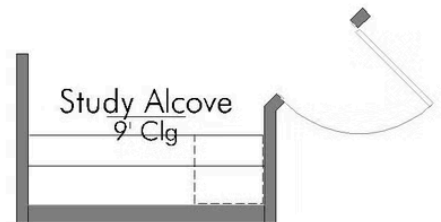
## WALK-IN SHOWER



## FIREPLACE



## STUDY ALCOVE



## P BATH SECOND SINK

