





5061 Dickinson Loop BELTON, TX 76513

[Three Creeks Community](#)



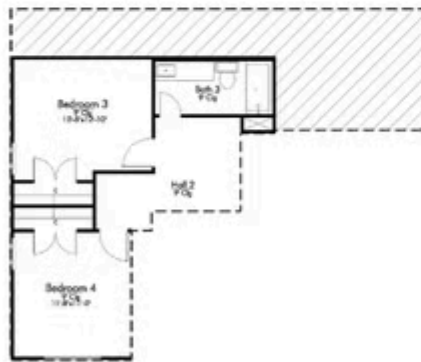
-  2,931 Ft²
-  4 Bedrooms
-  3.5 Bathrooms
-  2 Car Garage

Some images shown may be from a previously built Stylecraft home of similar design. Actual options, colors, and selections may vary. Contact us for details!

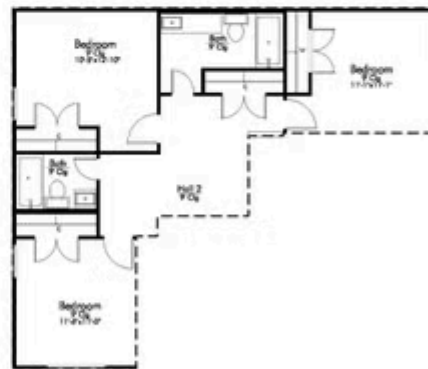
The Geary II floor plan is part of our innovative Flex Series, which allows homeowners to personalize the layout of their home to best fit their family. The kitchen is brimming with style, open with beautiful granite countertops opening up to the living room which is spacious and welcoming. You'll find sanctuary in your master which includes two walk-in closets, garden tub, large tile shower, and double vanity. The master bedroom is already incredibly spacious, but you have the option of adding an extra 7 feet in depth, or having French doors leading out to the covered back porch. This 4 bedroom, 3 bath home has the option of becoming up to a 6 bedroom, 5 bath home, or having a formal dining and a study. Built to fit the needs of your family, the Geary is sure to leave you smiling for years to come.



SECOND FLOOR PLAN



1.) 2 BEDROOMS, 1 BATH



2.) 3 BEDROOMS



FIRST FLOOR PLAN

B OPTIONS:

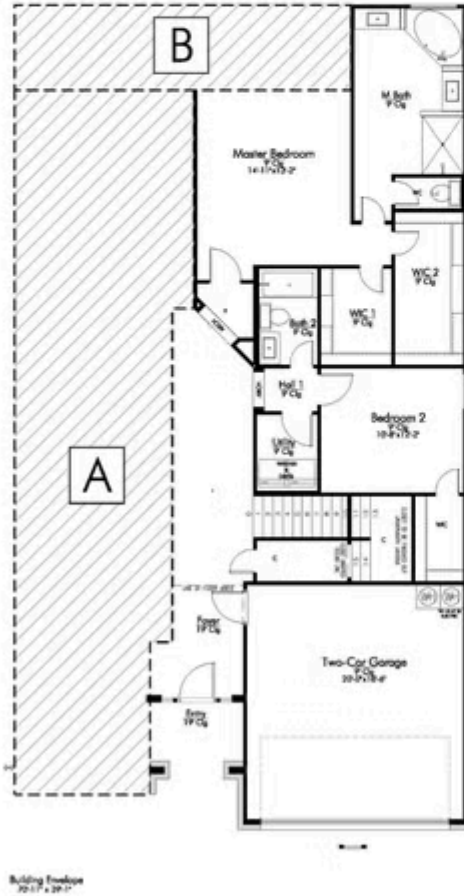


1.) EXTENDED PORCH



2.) EXTENDED MASTER BEDROOM

A OPTIONS:



1.) BEDROOM SUITE



2.) STUDY

