

# 2478



**QUESTIONS?  
GET FAST ANSWERS**



**2,492**  
SQ.FT.



**4**  
BEDROOMS



**3.0**  
BATHROOMS



**1**  
STORIES



**2 - CAR**  
GARAGE

Some images shown may be from a previously built Stylecraft home of similar design. Actual options, colors, and selections may vary. Contact us for details!

Showcasing our 2478 floorplan! Our exquisite 4 bed, 3 bath floorplan exemplifies the perfect blend of style, functionality, and comfort. To entertain with ease, the 2478 boasts an open-concept living area that seamlessly integrates with the kitchen, providing an inviting space for family gatherings. The heart of the home is the kitchen, featuring a modern island that offers ample counter space for meal preparation and additional storage. Overlooking the formal dining room, the kitchen flows effortlessly into the spacious living area, creating a cohesive and welcoming environment.

This thoughtfully designed home includes four bedrooms, one of which has a private ensuite, ideal for guests

*Stylecraft Builders reserves the right to change features, prices, plans and specifications without notice. Additional association fees may apply. Other fees may also apply. Please see your onsite sales associate for additional information and more details. © 2024 Stylecraft Builders.*



# 2478



**QUESTIONS?  
GET FAST ANSWERS**



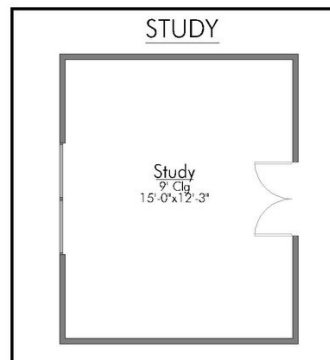
In continuous effort by Stylecraft Builders to improve the quality of your home, we reserve the right to change features, prices, plans and specifications without notice. Floorplans and elevation renderings are artists' conceptions only. Significant changes may be made during or after the construction of the model homes. Stylecraft Builders reserves the right to modify, relocate or eliminate any or all of the features, specifications, masterplan utilities, design or shape thereof, all without notice or obligations to any purchaser. Price range reflects base price only. Location premiums will be charged for certain locations and are not included in the base price of the home. Additional association fees may apply. Other fees may also apply. Amenities are proposed and planned or may be under construction. All square footages are approximate square footages of the total livable space. Water heater location deemed per city municipality code. Please see your onsite sales associate for additional information and more details. © 2024 Stylecraft Builders.



# 2478



**QUESTIONS?  
GET FAST ANSWERS**



In continuous effort by Stylecraft Builders to improve the quality of your home, we reserve the right to change features, prices, plans and specifications without notice. Floorplans and elevation renderings are artists' conceptions only. Significant changes may be made during or after the construction of the model homes. Stylecraft Builders reserves the right to modify, relocate or eliminate any or all of the features, specifications, masterplan utilities, design or shape thereof, all without notice or obligations to any purchaser. Price range reflects base price only. Location premiums will be charged for certain locations and are not included in the base price of the home. Additional association fees may apply. Other fees may also apply. Amenities are proposed and planned or may be under construction. All square footages are approximate square footages of the total livable space. Water heater location deemed per city municipality code. Please see your onsite sales associate for additional information and more details. © 2024 Stylecraft Builders.

