





The 2341

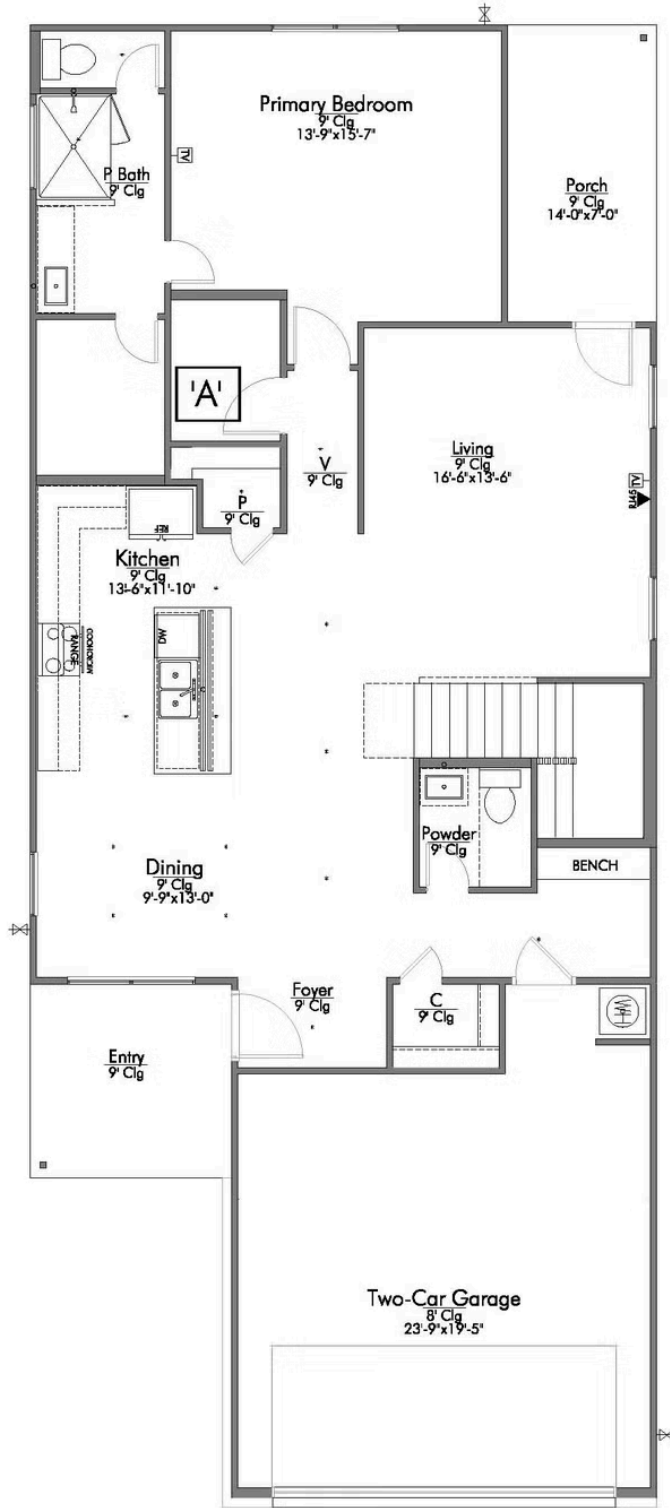


-  2,341 Ft²
-  4 Bedrooms
-  2.5 Bathrooms
-  2 Car Garage

Some images shown may be from a previously built Stylecraft home of similar design. Actual options, colors, and selections may vary. Contact us for details!

Stylecraft introduces The Brookshire! Inspired by the modern farmhouse and craftsman style homes, The Brookshire is part of our Heartland Series. Walk into an open-concept common area with a sizable kitchen island. The kitchen flows into the living room, with plenty of space to entertain! This two-story floorplan features 4 bedrooms with the option of adding a 3rd full bathroom upstairs. Downstairs, your home will feature a powder room! Featuring a dual primary vanity and a spacious primary bedroom with a walk-in closet, The Brookshire will be the home of your dreams.





Building Envelope
69'-11" x 29'-6"

